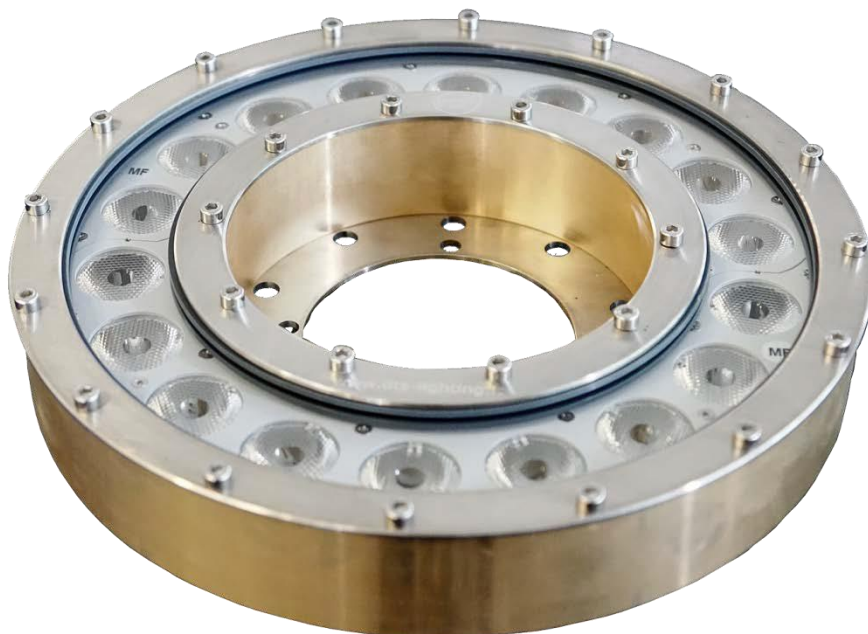


DONUT 18 FC



The best Full RGBW match for dancing Fountains

HIGH QUALITY RGBW
COLOR MIXING
IP68 / DESIGNED FOR
DANCING FOUNTAINS
EXTREMELY POWERFUL
STAINLESS STEEL & BRONZE BODY
CHOICE OF DIFFERENT
LENSES AVAILABLE



DONUT is an IP68 projector developed for fixed underwater installations. Its particular shape allows the fountain nozzle to pass through the central hole of the unit, so you always get the most suitable projection in dancing fountain applications.

DONUT is available with different optics (8° / 12° / 25° / 45°), and it features 18 Full RGBW LEDs. The unit is powered by DRVENET Series power supplies / controllers.



DONUT 18 FC



OUTPUT

18 x Full RGB LEDs
 Lumens: 7,200 @ 700mA
 LED lifespan: 50,000 hours (70% lumen output)

OPTICAL GROUP

4 lenses sets available:
 8° / 12° / 25° / 45°

INTERFACE/ CONTROL/ PROGRAMMING

DMX 512, RDM or ArtNet (via Drivenet series)

POWER SUPPLY

Power consumption: 180 Wmax
 PSU:
 - DRIVENET 416 (1 unit each 2 outputs, total 2)
 full range 100-240 Vac 50/60Hz
 - DRIVENET 832 (1 unit each 2 outputs, total 4)
 full range 100-240 Vac 50/60Hz
 - DRIVENET 1664 (1 unit each 2 outputs, total 8)
 180-260 Vac 50/60Hz

CONNECTIONS

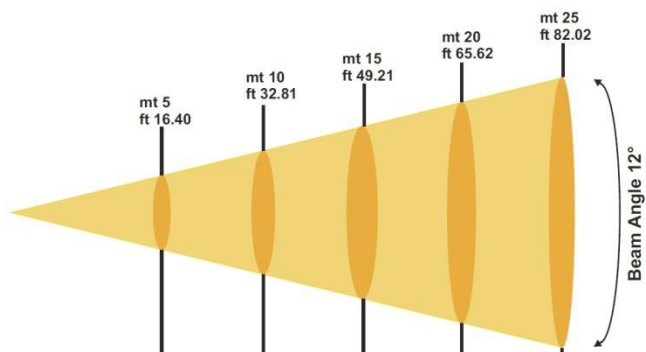
2 x end-stripped 8-pole cables (5 m)

OPERATING AMBIENT TEMPERATURE

-10° / 40°

PHYSICAL

IP68
 Housing: Bronze / Stainless steel
 Lens: 5 mm Tempered glass
 Dimensions: W300 mm/ H300 mm/ D121 mm
 Weight: 12.4 Kg



Lux center [lx]	3252	813	361	203	130
Foot candles [fc]	302	76	34	19	12
Diameter [cm]	105	210	315	420	526
Diameter [ft]	3,45	6,90	10,34	13,79	17,24

Beam Angle 12°